

UTi32

High temperature infrared thermal imager

Range: $-20^{\circ}\text{C} \sim 1000^{\circ}\text{C}$



Temperature accuracy

$\pm 2^{\circ}\text{C} / \pm 2\%$ whichever is larger

Image mode

Thermal imaging, fusion, visible light

Auto power off setting

10 minutes / 20 minutes / 30 minutes / off

Display brightness

Adjustable

Emissivity

Adjustable 0.01~1.00

High and low temperature alarm

High and low temperature real-time image alarm symbol display

Thermal imaging pixels

32 x 32

Three color palettes

Iron red, rainbow, gray and white

Language

Chinese and English optional

LED lighting / can take pictures

Photo can be stored

Center point temperature

High and low temperature automatic tracking

3.7V rechargeable lithium battery

Full battery life up to 7 hours

Center point temperature measurement, automatic tracking of high and low temperature



1、

Open the center point temperature measurement, a cross symbol temperature measurement point appears in the center of the screen, and the position where the center point is aligned with the object will display the temperature in the upper left corner in real time for accurate temperature measurement.

2、

Turn on the automatic tracking of high and low temperature, at this time, the highest/low temperature points in the real-time test interface will be automatically tracked, which is helpful to quickly check the abnormal temperature points.

High and low temperature alarm function settings

Temperature alarm: You can customize the temperature limit alarm function. After the setting is completed, you can choose to turn on/off the high temperature or low temperature alarm on the main interface.



Alarm prompt: When the measured temperature is higher than the set temperature limit, the screen will display a red triangle symbol prompt, and when the measured temperature is lower than the set temperature limit, the screen will display a blue triangle symbol prompt.



Image mode

(Thermal imaging, fusion, visible light)

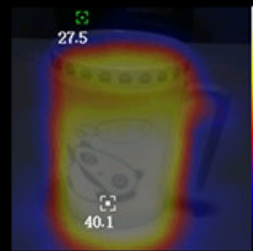
(Adjust according to the actual test situation, compare and analyze)



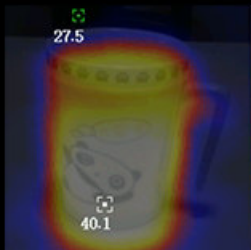
0%



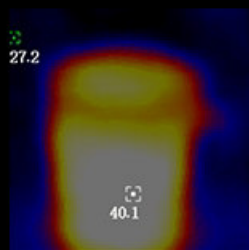
25%



50%



75%



100%

Adjust visible light/infrared image fusion, can adjust 0% (visible light image),
25%, 50%, 75%, 100% (full infrared image)

Palette choice



Iron oxide red



Rainbow

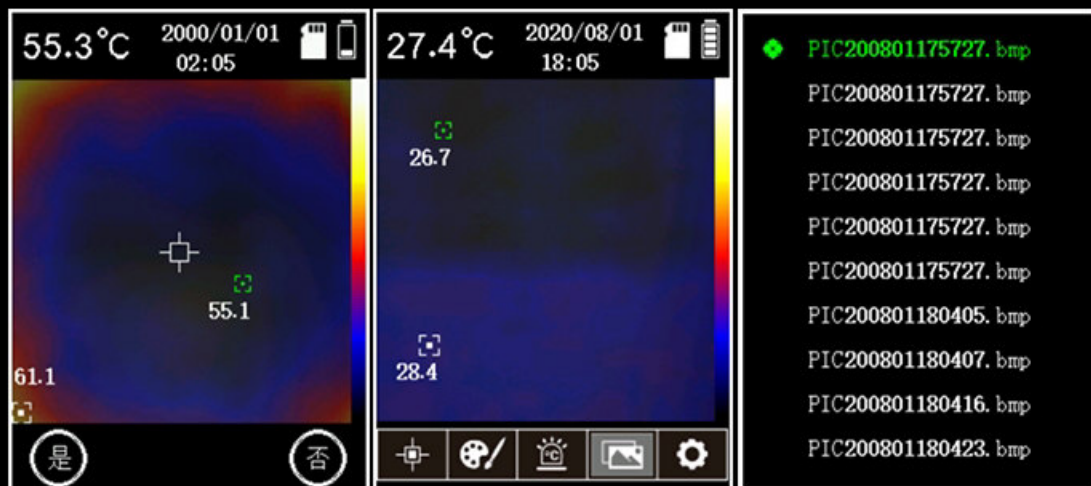


Gray

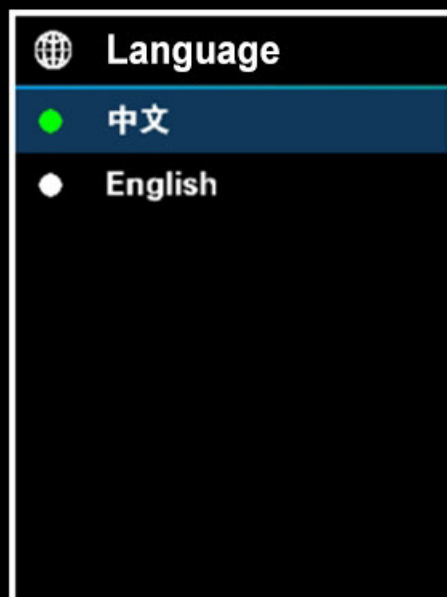


Swatch mode toggle

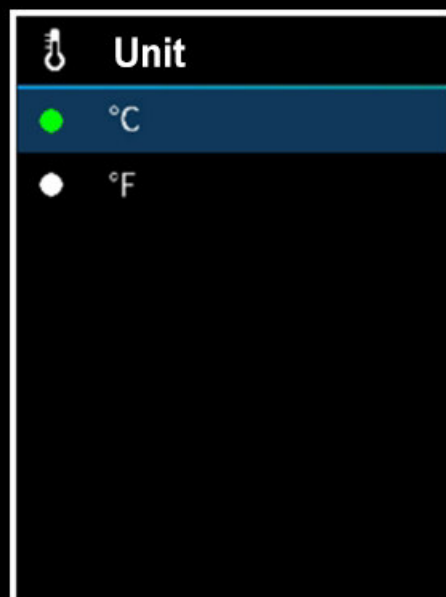
Photo storage, Photo browsing



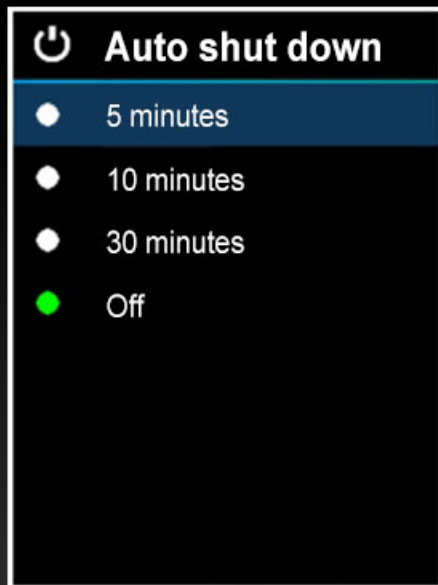
Chinese and English language switching



Celsius / Fahrenheit temperature unit switching



Auto power off setting



Automatic shutdown: The user can set the automatic shutdown function: off, 5 minutes, 10 minutes, 30 minutes, so that the power consumption caused by forgetting to shut down after the work is completed will affect the next work.

Emissivity adjustment



Adjustable emissivity: According to the thermal radiation energy of different objects, when we need the accurate temperature of the object to be measured, we need to select the appropriate emissivity according to the actual measured object (the manual is attached with a table of commonly used emissivity materials) to obtain accurate temperature.

Large capacity rechargeable lithium battery



3.7v Li-ion Battery (18650)

Rechargeable battery power supply mode, fully charged can be used for 7 hours, which can meet the needs of most of the day's maintenance and test use

LED lighting



Application field

It is widely used in power distribution inspection, HVAC maintenance, transportation equipment inspection, equipment maintenance, and automobile troubleshooting. It can judge whether the target is normal through real-time temperature measurement and temperature feedback. In the field of target temperature measurement in all walks of life, the non-contact detection method is safe and efficient.



Motor detection



Power distribution cabinet inspection



Pipeline inspection



Cold room inspection

Product appearance introduction



Technical indicators

Model	UTi32		
Screen specification	2.4 " LCD	Visible light shooting	Thermal imaging, fusion, visible light
Infrared resolution	32×32	Swatches	3
Field of view	30°×30°	High and low temperature tracking	√
Thermal sensitivity	0.15°C	LED lighting	√
Frame rate	9Hz	Battery	3.7V Li-ion Battery (18650)
Focus method	Free focus	Battery usage time	About 7 hours
Temperature range	-20~1000°C	Auto Off	Off, 5 minutes, 10 minutes, 30 minutes
Precision	±2% ±2°C	Storage type	Mirco SD卡
Temperature function	Center point / maximum / minimum	USB interface	Micro USB
Temperature unit	°C/°F	Use environment	-20°C~60°C < 85%RH (non-condensing)
Resolution	0.1°C	Operating temperature	0°C~50°C (32°F~122°F)
Emissivity	0.01~1.00	Working humidity	10%~95%RH
Photograph	√	Size	205×124×65
Visible light	√	Accessories	USB cable, SD card, Manual

Product List

- Host
- Manual
- Certificate
- 16G TF card
- Type-C USB cable

